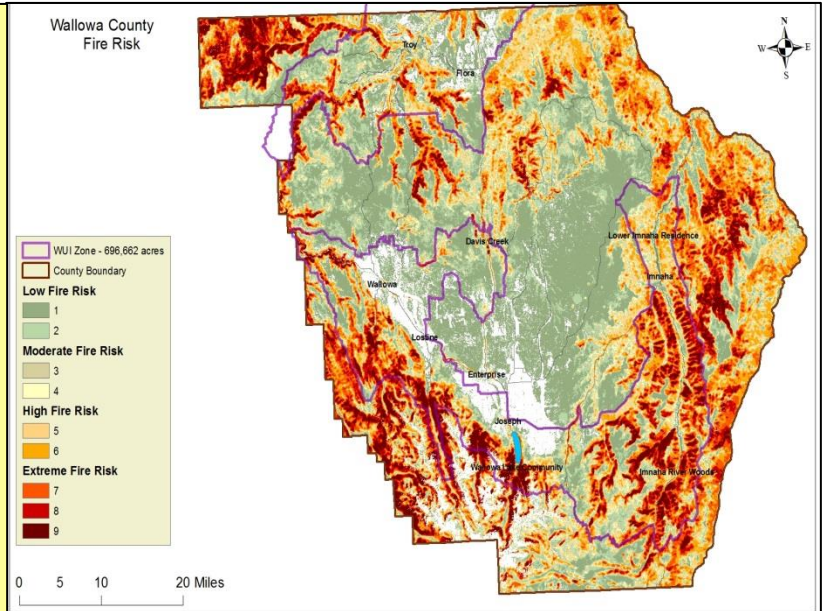


WALLOWA COUNTY Community Wildfire Protection Plan **PUBLIC MEETING**

COMMUNITY WILDFIRE PROTECTION PLAN

- The likelihood of a fire igniting and spreading combined with the potential for negative consequences;
- Identifies options to reduce fire risks;
- Opportunities for all landowners/agencies to partner together;
- Helps establish a plan of action before, during, and after a wildfire event.



→ **February 7, 2018 AT 6:00 PM** ←
Community Connections Building
701 NW 1st Street
Enterprise, Oregon



Discover the Findings in the new Plan Revision
Building Defensible Space Together

- What is a Community Wildfire Protection Plan?
- What does a County Wide Risk Assessment tell us?
- Is your Community at Risk?
- How can we work together to address wildfire risk?
- What actions can agencies & landowners take to mitigate wildfire risk?