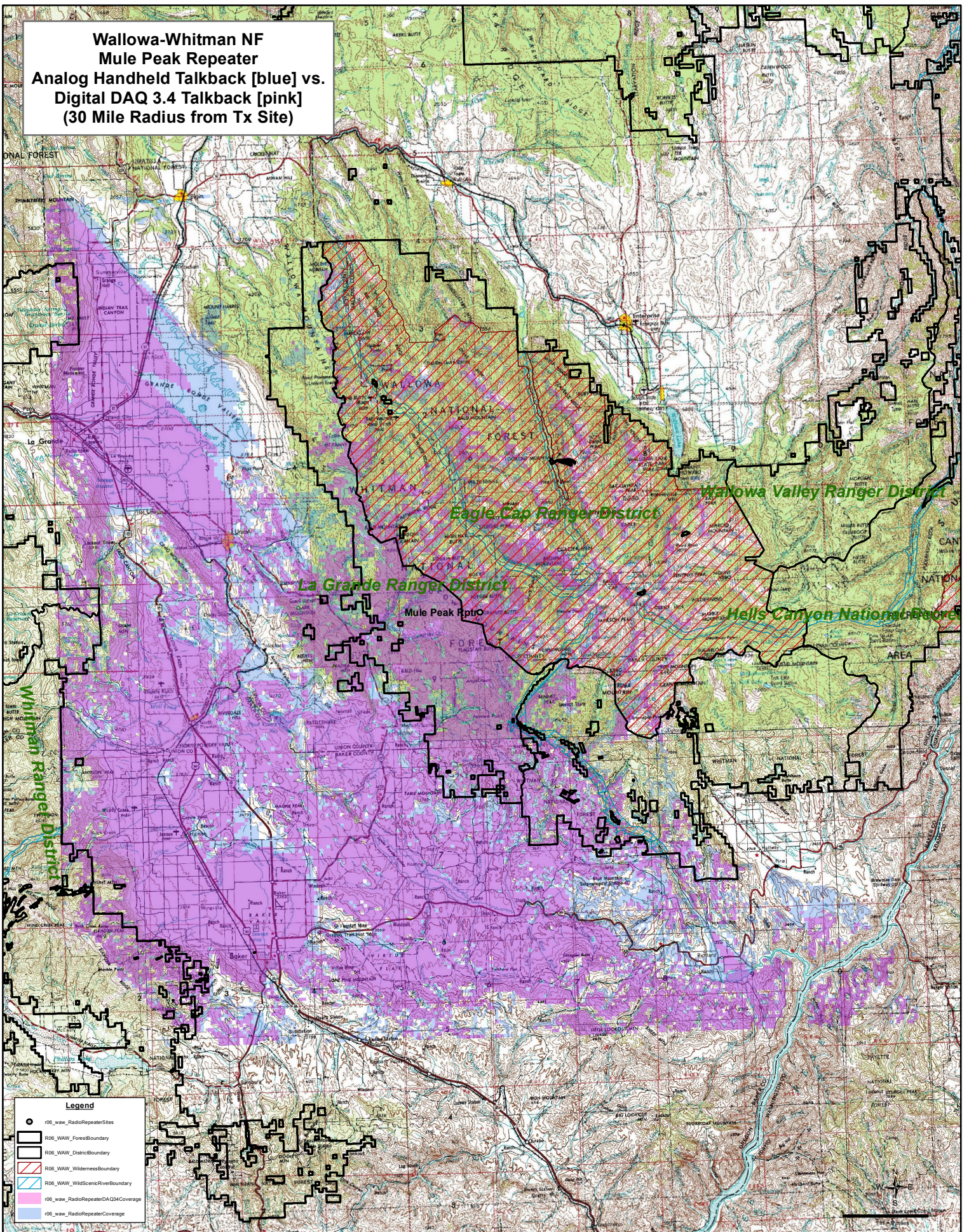


**Wallowa-Whitman NF
Mule Peak Repeater
Analog Handheld Talkback [blue] vs.
Digital DAQ 3.4 Talkback [pink]
(30 Mile Radius from Tx Site)**



- Legend**
- r06_waw_RadioRepeaterSites
 - R06_WAW_ForestBoundary
 - R06_WAW_DistrictBoundary
 - R06_WAW_WildernessBoundary
 - R06_WAW_WildScenicRiverBoundary
 - r06_waw_RadioRepeaterDAQ34Coverage
 - r06_waw_RadioRepeaterCoverage