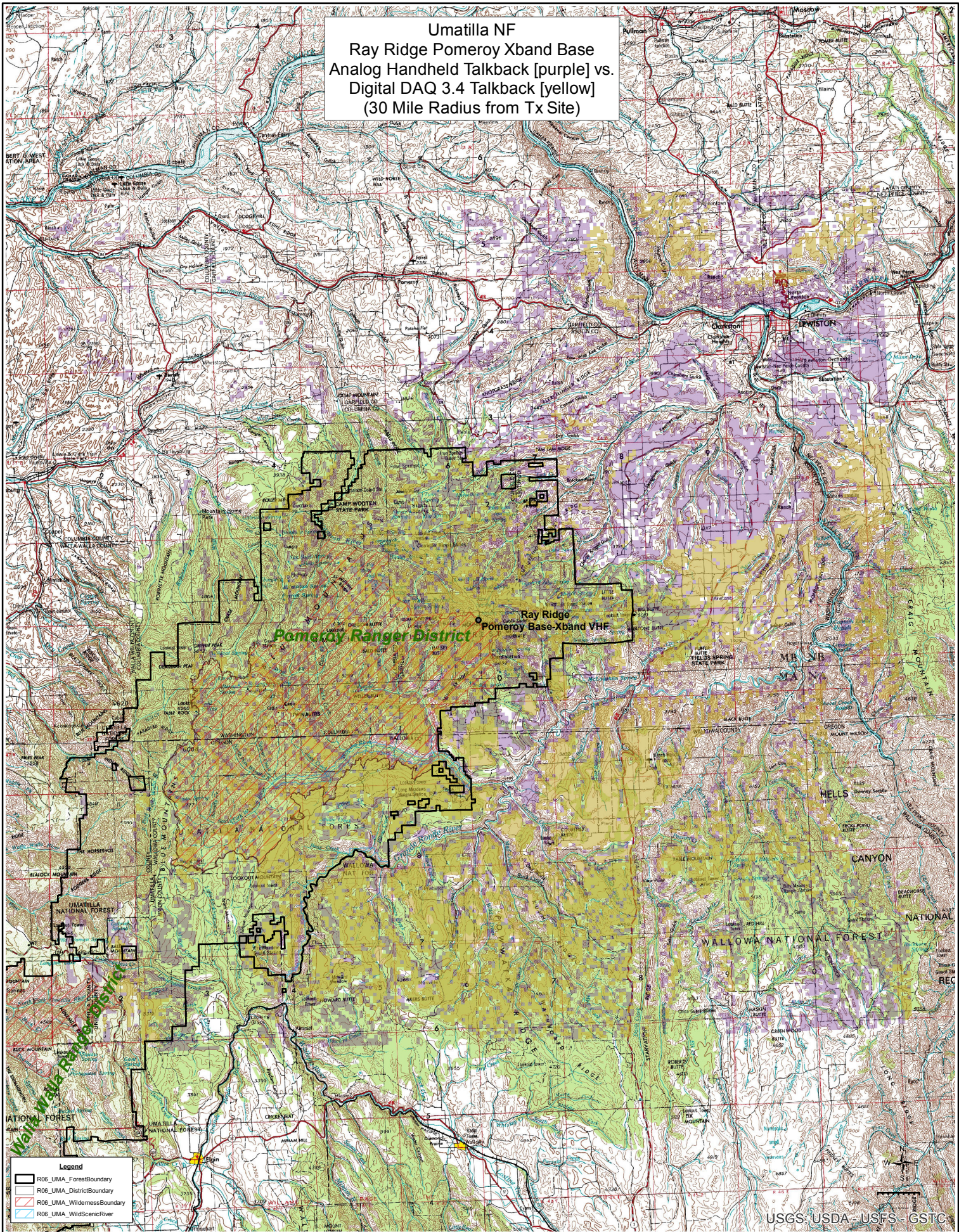


**Umatilla NF**  
**Ray Ridge Pomeroy Xband Base**  
**Analog Handheld Talkback [purple]** vs.  
**Digital DAQ 3.4 Talkback [yellow]**  
**(30 Mile Radius from Tx Site)**



**Legend**

- R06\_UMA\_ForestBoundary
- R06\_UMA\_DistrictBoundary
- R06\_UMA\_WildernessBoundary
- R06\_UMA\_WildScenicRiver

USGS, USDA - USFS - GSC