

| <u>Group</u> | <u>Name</u> | |
|--------------|---|-----------------------|
| 1 | Wallowa Whitman-Wallowa Repeaters | (Non-Tone Selectable) |
| 2 | Wallowa Whitman -Lagrande/Whitman Repeaters | (Non-Tone Selectable) |
| 3 | Wallowa Fire Zone | (Tone Selectable) |
| 4 | Snake River Corridor | (Tone Selectable) |
| 5 | Snake River "Snake" | (Non-Tone Selectable) |
| 6 | LaGrande Rural | (Tone Selectable) |
| 7 | Lagrande Unit | (Non-Tone Selectable) |
| 8 | Whitman Unit | (Tone Selectable) |
| 9 | Whitman Rural | (Tone Selectable) |
| 10 | Malhuer Blue Mtn RD | (Non-Tone Selectable) |
| 11 | Malhuer Prarie City | (Non-Tone Selectable) |
| 12 | Umatilla North Admin | (Non-Tone Selectable) |
| 13 | Umatilla South Admin | (Non-Tone Selectable) |
| 14 | Umatilla Type 3IA | (Tone Selectable) |
| 15 | W-W Type 3IA | (Tone Selectable) |



For Fire Radio Field Programming Assistance, Please Go To: <http://radios.nifc.gov/>

Important Changes for 2014

- *Starting this year receive tones will be used when available.
- *W-W Wallowa Unit frequencies have changed
- *Wallowa Unit has two new repeaters:Heavens Gate and Jim Creek Butte
- *Group 12 (The Easy Group) has been split into two groups (Group 1 and Group 2)
- *Easy Groups have been added for the Umatilla and Malhuer

Using RX tones eliminates unwanted interference from neighboring forests, vehicle ignition/computer noise, gas station noise as well as other sources. To use the RX tones simply keep the Squelch knob in the CG position (completely counter-clockwise)

2014 Wallowa-Whitman Frequencies

Final

Group 1 Wallowa-Whitman Repeaters North End

| Channel # | Name | RX Frequency | TX Frequency | Mode | RX Tone | TX Tone |
|-----------|-----------------|--------------|--------------|------|---------|---------|
| 1 | Akers | 170.6000 | 164.9625 | NB | 131.8 | 100.0 |
| 2 | Buckhorn | 170.6000 | 164.9625 | NB | 131.8 | 123.0 |
| 3 | Heavens Gate | 170.6000 | 164.9625 | NB | 131.8 | 162.2 |
| 4 | Mt. Howard | 170.6000 | 164.9625 | NB | 131.8 | 131.8 |
| 5 | Jim Creek | 170.6000 | 164.9625 | NB | 131.8 | 146.2 |
| 6 | Lookout | 170.6000 | 164.9625 | NB | 131.8 | 114.8 |
| 7 | Pt . Prominence | 170.6000 | 164.9625 | NB | 131.8 | 127.3 |
| 8 | Saddle Butte | 170.6000 | 164.9625 | NB | 131.8 | 136.5 |
| 9 | Somers | 170.6000 | 164.9625 | NB | 131.8 | 167.9 |
| 10 | WWF Project | 168.1500 | 168.1500 | NB | 131.8 | 131.8 |
| 11 | WWF Tactical | 167.5250 | 167.5250 | NB | 131.8 | 131.8 |
| 12 | A/G 44 | 167.6250 | 167.6250 | NB | | |
| 13 | A/G 9 | 166.9125 | 166.9125 | NB | | |
| 14 | ODF RED | 151.3400 | 151.3400 | NB | 156.7 | 156.7 |
| 15 | ODF White | 151.3100 | 151.3100 | NB | 156.7 | 156.7 |
| 16 | Air Guard | 168.6250 | 168.6250 | NB | | 110.9 |

2014 Wallowa-Whitman Frequencies

Final

Group 2 Wallowa-Whitman Lagrande/Whitman Repeaters

| Channel # | Name | RX Frequency | TX Frequency | Mode | RX Tone | TX Tone |
|-----------|---------------------|--------------|--------------|-----------|---------|--------------|
| 1 | Mt. Emily | 170.5250 | 164.8000 | NB | | 167.9 |
| 2 | Johnson Rock | 170.5250 | 164.8000 | NB | | 103.5 |
| 3 | Mule Peak | 170.5250 | 164.8000 | NB | | 151.4 |
| 4 | Beaver | 170.4625 | 164.1500 | NB | 131.8 | 127.3 |
| 5 | Summit | 170.4625 | 164.1500 | NB | 131.8 | 141.3 |
| 6 | Mt. Ireland | 170.4625 | 164.1500 | NB | 131.8 | 151.4 |
| 7 | Tablerock | 170.4625 | 164.1500 | NB | 131.8 | 162.2 |
| 8 | Sheep | 170.4625 | 164.1500 | NB | 131.8 | 192.8 |
| 9 | | | | | | |
| 10 | WWF Project | 168.1500 | 168.1500 | NB | 131.8 | 131.8 |
| 11 | WWF Tactical | 167.5250 | 167.5250 | NB | 131.8 | 131.8 |
| 12 | A/G 44 | 167.6250 | 167.6250 | NB | | |
| 13 | A/G 9 | 166.9125 | 166.9125 | NB | | |
| 14 | ODF RED | 151.3400 | 151.3400 | NB | 156.7 | 156.7 |
| 15 | ODF White | 151.3100 | 151.3100 | NB | 156.7 | 156.7 |
| 16 | Air Guard | 168.6250 | 168.6250 | NB | | 110.9 |

2014 Wallowa-Whitman Frequencies

Final

Group 3 Wallowa Fire Zone

| Channel # | Name | RX Frequency | TX Frequency | Mode | RX Tone | TX Tone | FS Tone # |
|-----------|------------------------|--------------|--------------|------|---------|---------|-----------|
| 1 | WWF Wallowa Unit | 170.6000 | 164.9625 | NB | | | |
| | Akers | | | | 131.8 | 100.0 | 9 |
| | Buckhorn | | | | 131.8 | 123.0 | 2 |
| | Heavens Gate | | | | 131.8 | 162.2 | 15 |
| | Mt. Howard | | | | 131.8 | 131.8 | 3 |
| | Jim Creek | | | | 131.8 | 146.2 | 5 |
| | Lookout | | | | 131.8 | 114.8 | 11 |
| | Pt . Prominence | | | | 131.8 | 127.3 | 12 |
| | Saddle Butte | | | | 131.8 | 136.5 | 4 |
| | Somers | | | | 131.8 | 167.9 | 7 |
| 2 | NORTH End Direct | 166.0000 | 166.0000 | NB | 131.8 | 131.8 | 3 |
| 3 | WWF Project | 168.1500 | 168.1500 | NB | 131.8 | 131.8 | 3 |
| 4 | WWF- Tactical | 167.5250 | 167.5250 | NB | 131.8 | 131.8 | 3 |
| 5 | A/G 44 | 167.6250 | 167.6250 | NB | | | |
| 6 | A/G 9 | 166.9125 | 166.9125 | NB | | | |
| 7 | ODF Courtney Rptr | 151.4375 | 159.3975 | NB | 131.8 | 146.2 | 5 |
| 8 | ODF White Net | 151.3100 | 151.3100 | NB | 156.7 | 156.7 | 6 |
| 9 | ODF Red Net | 151.3400 | 151.3400 | NB | 156.7 | 156.7 | 6 |
| 10 | Wallowa County | 155.0250 | 155.7750 | NB | | | |
| | Sheep Rptr | | | | | 141.3 | 13 |
| | Courtney Rptr | | | | | 114.8 | 11 |
| | Howard Butte | | | | | 167.9 | 7 |
| 11 | Enterprise FD TAC | 153.7700 | 153.7700 | NB | 141.3 | 141.3 | 13 |
| 12 | Joseph FD TAC | 153.8900 | 153.8900 | NB | 141.3 | 141.3 | 13 |
| 13 | Wallowa FD TAC | 154.1600 | 154.1600 | NB | 141.3 | 141.3 | 13 |
| 14 | SAR | 155.8050 | 155.8050 | NB | 156.7 | 156.7 | 6 |
| 15 | OR State Fire Marshal | 154.2800 | 154.2800 | NB | 156.7 | 156.7 | 6 |
| 16 | AIR GUARD | 168.6250 | 168.6250 | NB | | 110.9 | 1 |

2014 Wallowa-Whitman Frequencies

Group 4 Snake River Corridor

| | | | | | | | |
|----|-----------------------------|----------|----------|----|-------|-------|----|
| 1 | W-W North End Repeat | 170.6000 | 164.9625 | NB | | | |
| | Somers | | | | 131.8 | 167.9 | 7 |
| | Buckhorn | | | | 131.8 | 123.0 | 2 |
| | Lookout | | | | 131.8 | 114.8 | 11 |
| | Heavens gate | | | | 131.8 | 162.2 | 15 |
| | Jim Creek | | | | 131.8 | 146.2 | 5 |
| 2 | WWF Project | 168.1500 | 168.1500 | NB | 131.8 | 131.8 | 3 |
| 3 | A/G 44 | 167.6250 | 167.6250 | NB | | | |
| 4 | A/G 9 | 166.9125 | 166.9125 | NB | | | |
| 6 | NPF Heavens Gate Rptr | 170.5625 | 164.1375 | NB | | 146.2 | 5 |
| 7 | NPF Com Use 1 | 163.7125 | 163.7125 | NB | | | |
| 8 | NPF/IDL Air to Ground | 151.1450 | 151.1450 | NB | | | |
| 9 | PAF Cold Springs Rptr | 171.5500 | 172.3500 | NB | | 146.2 | 5 |
| 10 | PAF Tactical 1 | 166.9875 | 166.9875 | NB | | | |
| 11 | A/G 13 | 167.4250 | 167.4250 | NB | | | |
| 12 | IDL Jim Creek | 159.2325 | 151.3325 | NB | | 123.0 | 2 |
| 13 | IDL/NPF Tactical 2 | 159.2850 | 159.2850 | NB | 77 | 77.00 | 11 |
| 14 | Idaho County (Castle Butte) | 154.1150 | 156.0150 | NB | | 127.3 | 12 |
| 15 | Maritime Emergency | 156.8000 | 156.8000 | NB | | | |
| 16 | Air Guard | 168.6250 | 168.6250 | NB | | 110.9 | 1 |

Group 5 W-W Snake River

| Channel # | Name | RX Frequency | TX Frequency | Mode | RX Tone | TX Tone | FS Tone # |
|-----------|-------------------|--------------|--------------|------|---------|---------|-----------|
| 1 | Cotton Wood (IDL) | 159.4650 | 151.2650 | NB | | 127.3 | |
| 2 | Jim Creek (IDL) | 159.2325 | 151.3325 | NB | | 123.0 | |
| 3 | NPF Cold Springs | 170.5625 | 164.1375 | NB | | 141.3 | |
| 4 | NPF Heavens Gate | 170.5625 | 164.1375 | NB | | 146.2 | |
| 5 | IDL TAC | 159.2850 | 159.2850 | NB | 77.0 | 77.0 | |
| 6 | IDL Air to Ground | 151.1450 | 151.1450 | NB | | | |
| 7 | PAF Cold Springs | 171.5500 | 172.3500 | NB | | 146.2 | |
| 8 | PAF TAC | 166.9875 | 166.9875 | NB | | | |
| 9 | A/G 13 | 167.4250 | 167.4250 | NB | 100.0 | 100.0 | |
| 10 | WWF Somers Point | 170.6000 | 164.9625 | NB | 131.8 | 167.9 | |
| 11 | WWF Heaven's Gate | 170.6000 | 164.9625 | NB | 131.8 | 162.2 | |
| 12 | WWF Jim Creek | 170.6000 | 164.9625 | NB | 131.8 | 146.2 | |
| 13 | WWF Lookout | 170.6000 | 164.9625 | NB | 131.8 | 114.8 | |
| 14 | WWF- Tactical | 167.5250 | 167.5250 | NB | 131.8 | 131.8 | |
| 15 | A/G 9 | 166.9125 | 166.9125 | NB | | | |
| 16 | Air Guard | 168.6250 | 168.6250 | NB | | 110.9 | |

2014 Wallowa-Whitman Frequencies

Final

| | | |
|----------------|----------------------------|------------------------|
| Group 6 | Lagrande Unit Rural | Tone Selectable |
|----------------|----------------------------|------------------------|

| Channel # | Name | RX Frequency | TX Frequency | Mode | RX Tone | TX Tone | FS Tone # |
|-----------|--------------------------|--------------|--------------|------|---------|---------|-----------|
| 1 | W-W Lagrande Repeaters | 170.5250 | 164.8000 | NB | | | |
| | Mt. Emily | | | | | 167.9 | 7 |
| | Johnson Rock | | | | | 103.5 | 8 |
| | Mule Peak | | | | | 151.4 | 14 |
| 2 | ODF Mt Emily #2 Rptr | 151.2425 | 159.4050 | NB | 131.8 | 131.8 | 3 |
| 3 | WWF- Tactical | 167.5250 | 167.5250 | NB | 131.8 | 131.8 | 3 |
| 4 | WWF Project | 168.1500 | 168.1500 | NB | 131.8 | 131.8 | 3 |
| 5 | Red Net | 151.3400 | 151.3400 | NB | 156.7 | 156.7 | 6 |
| 6 | White Net | 151.3100 | 151.3100 | NB | 156.7 | 156.7 | 6 |
| 7 | Union County Fire | 154.4450 | 154.4450 | NB | 173.8 | 173.8* | 9 |
| 8 | Union County Tac 4 | 158.8200 | 158.8200 | NB | 173.8 | 173.8* | 9 |
| 9 | UMF Project | 168.7750 | 168.7750 | NB | 131.8 | 131.8 | 3 |
| 10 | OR State Fire Marshal | 154.2800 | 154.2800 | NB | 156.7 | 156.7 | 6 |
| 11 | A/G 44 | 167.6250 | 167.6250 | NB | | | |
| 12 | A/G 9 | 166.9125 | 166.9125 | NB | | | |
| 13 | W-W Whitman Repeaters | 170.4625 | 164.1500 | NB | | | |
| | Beaver | | | | 131.8 | 127.3 | 12 |
| | Summit | | | | 131.8 | 141.3 | 13 |
| | Mt Ireland | | | | 131.8 | 151.4 | 14 |
| | Tablerock | | | | 131.8 | 162.2 | 15 |
| | Sheep Mt. | | | | 131.8 | 192.8 | 16 |
| 14 | UMF North Fork Repeaters | 164.1250 | 170.3250 | NB | | | |
| | Desolation Rptr | | | | | 103.5 | 8 |
| | Tower Mtn Rptr | | | | | 141.3 | 13 |
| | Bone Point Rptr | | | | | 162.2 | 15 |
| 15 | OR State SAR | 155.8050 | 155.8050 | NB | 156.7 | 156.7 | 6 |
| 16 | Air Guard | 168.6250 | 168.6250 | NB | | 110.9 | 1 |

2014 Wallowa-Whitman Frequencies

Final

Group 7 Lagrande Unit

| Channel # | Name | RX Frequency | TX Frequency | Mode | RX Tone | TX Tone |
|-----------|-------------------------|--------------|--------------|------|---------|---------|
| 1 | WWF Project | 168.1500 | 168.1500 | NB | 131.8 | 131.8 |
| 2 | WWF- Tactical | 167.5250 | 167.5250 | NB | 131.8 | 131.8 |
| 3 | W-W Mt. Emily FS | 170.5250 | 164.8000 | NB | | 167.9 |
| 4 | W-W Mule Peak FS | 170.5250 | 164.8000 | NB | | 151.4 |
| 5 | W-W Johnson Rock FS | 170.5250 | 164.8000 | NB | | 103.5 |
| 6 | ODF Red Net | 151.3400 | 151.3400 | NB | 156.7 | 156.7 |
| 7 | ODF White Net | 151.3100 | 151.3100 | NB | 156.7 | 156.7 |
| 8 | Union County Fire | 154.4450 | 154.4450 | NB | 173.8 | 173.8 |
| 9 | ODF Mt Emily #2 Rptr | 151.2425 | 159.4050 | NB | 131.8 | 131.8 |
| 10 | W-W Summit FS | 170.4625 | 164.1500 | NB | 131.8 | 141.3 |
| 11 | W-W Beaver FS | 170.4625 | 164.1500 | NB | 131.8 | 127.3 |
| 12 | UMF North Fork Tower FS | 164.1250 | 170.3250 | NB | | 141.3 |
| 13 | UMF Project | 168.7750 | 168.7750 | NB | 131.8 | 131.8 |
| 14 | A/G 9 | 166.9125 | 166.9125 | NB | | |
| 15 | A/G 44 | 167.6250 | 167.6250 | NB | | |
| 16 | Air Guard | 168.6250 | 168.6250 | NB | | 110.9 |

2014 Wallowa-Whitman Frequencies

Group 8 Whitman Unit

| Channel # | Name | RX Frequency | TX Frequency | Mode | RX Tone | TX Tone | FS Tone # |
|-----------|-----------------------|--------------|--------------|------|---------|---------|-----------|
| 1 | MAF-Prarie | 173.0250 | 171.5750 | NB | | | |
| | East Dixie | | | | | 123.0 | 2 |
| | East Sheep | | | | | 146.2 | 5 |
| | East Antelope | | | | | 156.7 | 6 |
| 2 | UMF- North Fork | 164.1250 | 170.3250 | NB | | | |
| | Tower Mtn | | | | | 141.3 | 13 |
| | Desolation | | | | | 103.5 | 8 |
| | Bone Point | | | | | 162.2 | 16 |
| 3 | Wallowa-Whitman South | 170.4625 | 164.1500 | NB | | | |
| | Beaver | | | | 131.8 | 127.3 | 12 |
| | Summit | | | | 131.8 | 141.3 | 13 |
| | Mt Ireland | | | | 131.8 | 151.4 | 14 |
| | Tablerock | | | | 131.8 | 162.2 | 15 |
| | Sheep | | | | 131.8 | 192.8 | 16 |
| 4 | W-W TAC | 167.5250 | 167.5250 | NB | 131.8 | 131.8 | 3 |
| 5 | WWF Project | 168.1500 | 168.1500 | NB | 131.8 | 131.8 | 3 |
| 6 | A/G 44 | 167.6250 | 167.6250 | NB | | | |
| 7 | A/G 9 | 166.9125 | 166.9125 | NB | | | |
| 8 | ODF-South | 151.2425 | 159.4050 | NB | | | |
| | Beaver | | | | 131.8 | 162.2 | 15 |
| | Mt Emily 2 | | | | 131.8 | 131.8 | 3 |
| 9 | A/G 62 | 169.3625 | 169.3625 | NB | | | |
| 10 | ODF-Red Net | 151.3400 | 151.3400 | NB | 156.7 | 156.7 | 6 |
| 11 | ODF-White Net | 151.3100 | 151.3100 | NB | 156.7 | 156.7 | 6 |
| 12 | A/G 38 | 167.3750 | 167.3750 | NB | | | |
| 13 | BLM-Lookout Mtn | 172.6125 | 166.3750 | NB | 88.0 | 114.8 | 11 |
| 14 | BLM-Beaver Rptr | 171.6500 | 166.3000 | NB | 88.0 | 107.2 | 10 |
| 15 | BLM-SOA Direct | 173.6750 | 173.6750 | NB | 131.8 | 131.8 | 3 |
| 16 | AIR GUARD | 168.6250 | 168.6250 | NB | | 110.9 | 1 |

2014 Wallowa-Whitman Frequencies

Final

Group 9 Whitman Rural

| Channel # | Name | RX Frequency | TX Frequency | Mode | RX Tone | TX Tone | FS Tone # |
|-----------|----------------------|--------------|------------------------------------|------|---------|---------|-----------|
| 1 | ODF South/Beaver | 151.2425 | 159.4050 | NB | 131.8 | 162.2 | 15 |
| 2 | ODF Red Net | 151.3400 | 151.3400 | NB | 156.7 | 156.7 | 6 |
| 3 | Whitman RD | 170.4625 | 164.1500 | NB | | | |
| | Beaver FS | | | | 131.8 | 127.3 | 12 |
| | Summit | | | | 131.8 | 141.3 | 13 |
| | Mt Ireland | | | | 131.8 | 151.4 | 14 |
| 4 | A/G 9 | 166.9125 | 166.9125 | NB | | | |
| 5 | WWF Project | 168.1500 | 168.1500 | NB | 131.8 | 131.8 | 3 |
| 6 | A/G 44 | 167.6250 | 167.6250 | NB | | | |
| 7 | ODF White Net | 151.3100 | 151.3100 | NB | 156.7 | 156.7 | 6 |
| 8 | State Fire Marshal | 154.2800 | 154.2800 | NB | 156.7 | 156.7 | 6 |
| 9 | BLM Beaver Rptr. | 171.6500 | 166.3000 | NB | | 107.2 | 10 |
| 10 | Baker County Interop | 151.1375 | 151.1375 | NB | 156.7 | 156.7 | 6 |
| 11 | Baker County Tac 1 | 158.7375 | 158.7375 | NB | 156.7 | 156.7 | 6 |
| 12 | Baker County Tac 2 | 154.1000 | 154.1000 | NB | 156.7 | 156.7 | 6 |
| 13 | Baker County Tac 5 | 154.1600 | 154.1600 | NB | 156.7 | 156.7 | 6 |
| 14 | Baker County RED | 153.9650 | 155.0550 | NB | | | |
| | Baker City | | | | 131.8 | 77.0 | 2 |
| | Beaver Ridge | | | | 131.8 | 179.9 | 4 |
| | Lone Pine | | | | 131.8 | 186.2 | 5 |
| | Summit | | | | 131.8 | 107.2 | 10 |
| | Sumpster** | | **Disable CG to use this repeater. | | | 173.8 | 7 |
| | Lime | | | | 131.8 | 146.2 | 5 |
| | Powder River Canyon | | | | 131.8 | 192.8 | 16 |
| | Elkhorn Relay | | | | 131.8 | 110.9 | 1 |
| 15 | OR State SAR | 155.8050 | 155.8050 | NB | 156.7 | 156.7 | 6 |
| 16 | Air Guard | 168.6250 | 168.6250 | NB | | 110.9 | 1 |

2014 Wallowa-Whitman Frequencies

Final

Group 10 MAL Blue Mountain RD

| Channel # | Name | RX Frequency | TX Frequency | Mode | RX Tone | TX Tone |
|-----------|------------------|--------------|--------------|------|---------|---------|
| 1 | North Long Creek | 172.4000 | 169.5750 | NB | | 110.9 |
| 2 | North Dixie | 172.4000 | 169.5750 | NB | | 123.0 |
| 3 | North Aldrich | 172.4000 | 169.5750 | NB | | 131.8 |
| 4 | North Fall Mtn | 172.4000 | 169.5750 | NB | | 136.5 |
| 5 | North Snow Mtn | 172.4000 | 169.5750 | NB | | 103.5 |
| 6 | Project | 170.5000 | 170.5000 | NB | | |
| 7 | North-PORTABLE | 172.4000 | 169.5750 | NB | | 100.0 |
| 8 | A/G 38 | 167.3750 | 167.3750 | NB | | |
| 9 | FireNet Fall Mtn | 167.5000 | 167.5000 | NB | | 136.5 |
| 10 | FireNet Dixie | 167.5000 | 167.5000 | NB | | 123.0 |
| 11 | ODF Direct | 151.2050 | 151.2050 | NB | | 162.2 |
| 12 | ODF Red Net | 151.3400 | 151.3400 | NB | 156.7 | 156.7 |
| 13 | ODF White Net | 151.3100 | 151.3100 | NB | 156.7 | 156.7 |
| 14 | A/G 24 | 168.6375 | 168.6375 | NB | | |
| 15 | BLM SOA Direct | 173.6750 | 173.6750 | NB | 131.8 | 131.8 |
| 16 | Air Guard | 168.6250 | 168.6250 | NB | | 110.9 |

Group 11 MAL Prarie City

| Channel # | Name | RX Frequency | TX Frequency | Mode | RX Tone | TX Tone |
|-----------|-----------------|--------------|--------------|------|---------|---------|
| 1 | East Dixie | 173.0250 | 171.5750 | NB | | 123.0 |
| 2 | East Sheep | 173.0250 | 171.5750 | NB | | 146.2 |
| 3 | East Antelope | 173.0250 | 171.5750 | NB | | 156.7 |
| 4 | East King Mtn | 173.0250 | 171.5750 | NB | | 167.9 |
| 5 | WW Tablerock | 170.4625 | 164.1500 | NB | | 162.2 |
| 6 | Project | 170.5000 | 170.5000 | NB | | |
| 7 | East - PORTABLE | 173.0250 | 171.5750 | NB | | 100.0 |
| 8 | A/G 38 | 167.3750 | 167.3750 | NB | | |
| 9 | North Dixie | 172.4000 | 169.5750 | NB | | 123.0 |
| 10 | FireNet Dixie | 167.5000 | 167.5000 | NB | | 123.0 |
| 11 | ODF Direct | 151.2050 | 151.2050 | NB | | 162.2 |
| 12 | ODF Red Net | 151.3400 | 151.3400 | NB | 156.7 | 156.7 |
| 13 | ODF White Net | 151.3100 | 151.3100 | NB | 156.7 | 156.7 |
| 14 | A/G 24 | 168.6375 | 168.6375 | NB | | |
| 15 | BLM SOA Direct | 173.6750 | 173.6750 | NB | 131.8 | 131.8 |
| 16 | Air Guard | 168.6250 | 168.6250 | NB | | 110.9 |

2014 Wallowa-Whitman Frequencies

Final

Group 12 Umatilla Admin North

| Channel # | Name | RX Frequency | TX Frequency | Mode | RX Tone | TX Tone |
|-----------|----------------------|--------------|--------------|------|---------|---------|
| 1 | UMF TAC | 168.2375 | 168.2375 | NB | 131.8 | 131.8 |
| 2 | UMF Project | 168.7750 | 168.7750 | NB | 131.8 | 131.8 |
| 3 | WW - Black Mtn North | 171.7875 | 163.3750 | NB | 131.8 | 110.9 |
| 4 | WW - Spout Springs | 171.7875 | 163.3750 | NB | 131.8 | 114.8 |
| 5 | WW - Bone Springs | 171.7875 | 163.3750 | NB | 131.8 | 123.0 |
| 6 | WW - Lookout | 171.7875 | 163.3750 | NB | 131.8 | 131.8 |
| 7 | WW - Table Rock | 171.7875 | 163.3750 | NB | 131.8 | 103.5 |
| 8 | PM - Tallow Flat | 173.7750 | 164.8250 | NB | 131.8 | 156.7 |
| 9 | PM - Cottonwood | 173.7750 | 164.8250 | NB | 131.8 | 131.8 |
| 10 | PM - Robertson Field | 173.7750 | 164.8250 | NB | 131.8 | 123.0 |
| 11 | PM - Saddle Butte | 173.7750 | 164.8250 | NB | 131.8 | 146.2 |
| 12 | PM - Diamond Peak | 173.7750 | 164.8250 | NB | 131.8 | 151.4 |
| 13 | PM - Oregon Butte | 173.7750 | 164.8250 | NB | 131.8 | 167.9 |
| 14 | A/G 44 | 167.6250 | 167.6250 | NB | | |
| 15 | WA SAR | 155.1600 | 155.1600 | NB | 156.7 | 156.7 |
| 16 | National Air Guard | 168.6250 | 168.6250 | NB | | 110.9 |

Group 13 Umatilla Admin South

| Channel # | Name | RX Frequency | TX Frequency | Mode | RX Tone | TX Tone |
|-----------|----------------------|--------------|--------------|------|---------|---------|
| 1 | UMF TAC | 168.2375 | 168.2375 | NB | 131.8 | 131.8 |
| 2 | UMF Project | 168.7750 | 168.7750 | NB | 131.8 | 131.8 |
| 3 | HP - Madison | 162.9625 | 166.6875 | NB | | 136.5 |
| 4 | HP - Tamarack | 162.9625 | 166.6875 | NB | | 156.7 |
| 5 | HP - Black Mtn South | 162.9625 | 166.6875 | NB | | 141.3 |
| 6 | NF - Tower Mtn | 164.1250 | 170.3250 | NB | | 141.3 |
| 7 | NF - Desolation | 164.1250 | 170.3250 | NB | | 103.5 |
| 8 | NF - Bone Point | 164.1250 | 170.3250 | NB | | 162.2 |
| 9 | ODF - Black Mtn | 151.1600 | 159.4425 | NB | 131.8 | 141.3 |
| 10 | ODF - Fossil/Madison | 151.1450 | 159.2850 | NB | 162.2 | 151.4 |
| 11 | A/G 44 | 167.6250 | 167.6250 | NB | | |
| 12 | A/G 9 | 166.9125 | 166.9125 | NB | | |
| 13 | A/G 38 | 167.3750 | 167.3750 | NB | | |
| 14 | A/G 24 | 168.6375 | 168.6375 | NB | | |
| 15 | OR SAR | 155.8050 | 155.8050 | NB | | 156.7 |
| 16 | National Air Guard | 168.6250 | 168.6250 | NB | | 110.9 |

2014 Wallowa-Whitman Frequencies

Final

Group 14 UMA Type 3IA

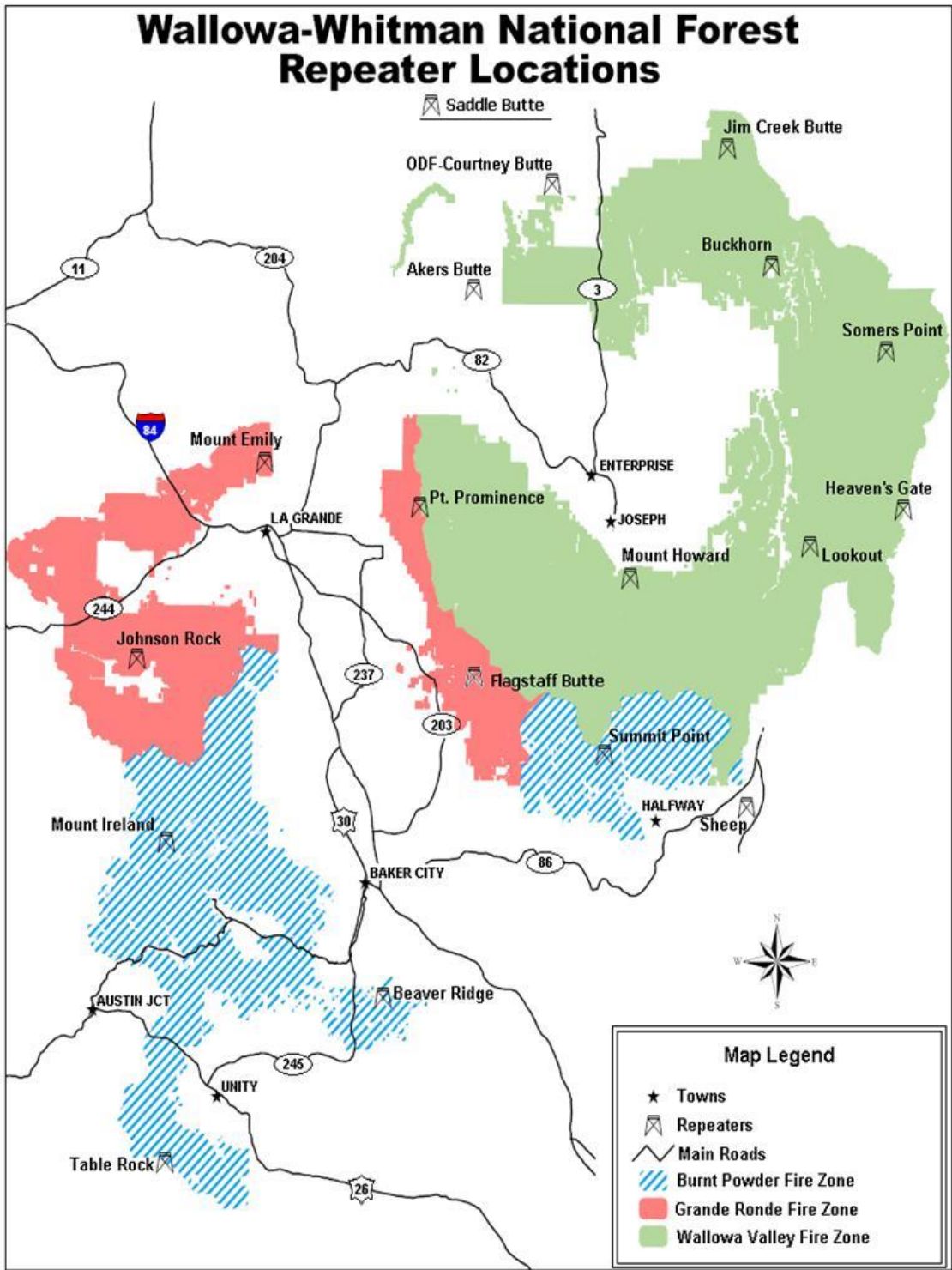
| Channel # | Name | RX Frequency | TX Frequency | Mode | RX Tone | TX Tone | FS Tone # |
|-----------|-----------------------|--------------|--------------|------|---------|---------|-----------|
| 1 | TAC 1 | 166.7250 | 166.7250 | NB | | | |
| 2 | TAC 2 | 166.7750 | 166.7750 | NB | | | |
| 3 | TAC 3 | 168.2500 | 168.2500 | NB | | | |
| 4 | CMD 1 | 164.1250 | 170.3250 | NB | | | |
| | Desolation Rptr | | | | | 103.5 | 8 |
| | Tower Mtn Rptr | | | | | 141.3 | 13 |
| | Bone Point Rptr | | | | | 162.2 | 15 |
| 5 | CMD 2 | 171.7875 | 163.3750 | NB | | | |
| | Black Mtn Rptr | | | | 131.8 | 110.9 | 1 |
| | Spout Springs | | | | 131.8 | 114.8 | 11 |
| | Bone Springs | | | | 131.8 | 123.0 | 2 |
| | Lookout Repeater | | | | 131.8 | 131.8 | 3 |
| | Tablerock | | | | 131.8 | 103.5 | 8 |
| 6 | CMD 3 | 173.7750 | 164.8250 | NB | | | |
| | Tallow Flat Rptr | | | | 131.8 | 156.7 | 6 |
| | Cottonwood Rptr | | | | 131.8 | 131.8 | 3 |
| | Robertson Field Rptr | | | | 131.8 | 123.0 | 2 |
| | Saddle Butte Rptr | | | | 131.8 | 146.2 | 5 |
| | Diamond Peak Rptr | | | | 131.8 | 151.4 | 14 |
| | Oregon Butte Rptr | | | | 131.8 | 167.9 | 7 |
| 7 | CMD 4 | 151.1600 | 159.4425 | NB | | | |
| | Mt. Emily | | | | 131.8 | 131.8 | 3 |
| | Black Mtn | | | | 131.8 | 141.3 | 13 |
| | Spout | | | | 131.8 | 179.9 | 12 |
| 8 | CMD 5 | 151.4375 | 159.3975 | NB | 131.8 | 146.2 | 5 |
| 9 | ODF RED | 151.3400 | 151.3400 | NB | 156.7 | 156.7 | 6 |
| 10 | ODF WHITE | 151.3100 | 151.3100 | NB | 156.7 | 156.7 | 6 |
| 11 | UMA Project | 168.7750 | 168.7750 | NB | 131.8 | 131.8 | 3 |
| 12 | A/G 44 | 167.6250 | 167.6250 | NB | | | |
| 13 | A/G 9 | 166.9125 | 166.9125 | NB | | | |
| 14 | OR STATE FIRE MARSHAL | 154.2800 | 154.2800 | NB | 156.7 | 156.7 | 6 |
| 15 | OPEN | | | | | | |
| 16 | AIR GUARD | 168.6250 | 168.6250 | NB | | 110.9 | 1 |

2014 Wallowa-Whitman Frequencies

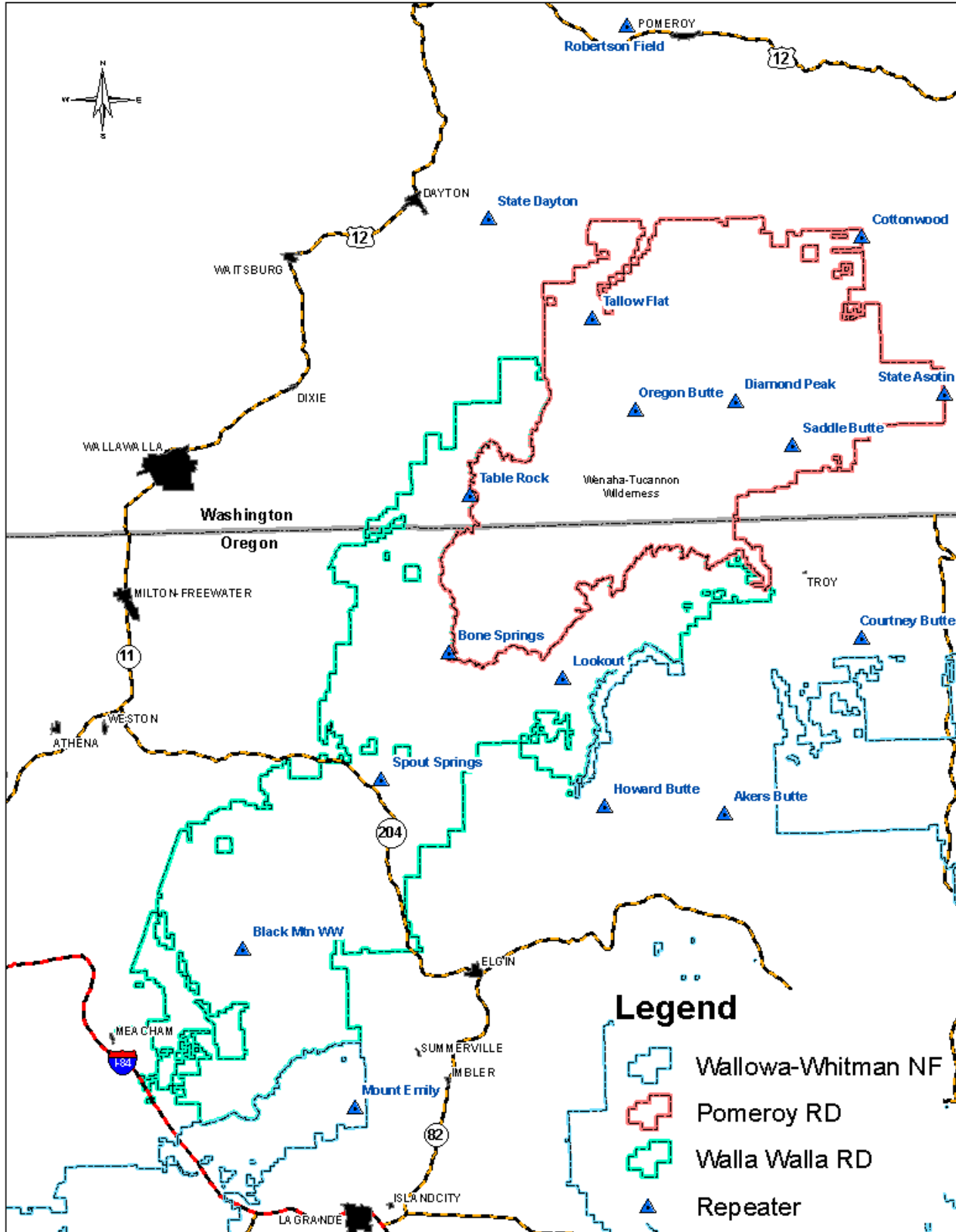
Final

Group 15 W-W Type 3 IA Team

| Channel # | Name | RX Frequency | TX Frequency | Mode | RX Tone | TX Tone | FS Tone # |
|-----------|-----------------------|--------------|--------------|------|---------|---------|-----------|
| 1 | TAC 1 | 168.0500 | 168.0500 | NB | | | |
| 2 | TAC 2 | 168.2000 | 168.2000 | NB | | | |
| 3 | TAC 3 | 168.6000 | 168.6000 | NB | | | |
| 4 | CMD 1 | 170.5250 | 164.8000 | NB | | | |
| | MT. EMILY | | | | | 167.9 | 7 |
| | JOHNSON ROCK | | | | | 103.5 | 8 |
| | MULE PEAK | | | | | 151.4 | 14 |
| 5 | CMD 2 | 170.4625 | 164.1500 | NB | | | |
| | Beaver | | | | 131.8 | 127.3 | 12 |
| | Summit | | | | 131.8 | 141.3 | 13 |
| | Mt Ireland | | | | 131.8 | 151.4 | 14 |
| | Tablerock | | | | 131.8 | 162.2 | 15 |
| | Sheep Mt. | | | | 131.8 | 192.8 | 16 |
| 6 | CMD 3 | 170.6000 | 164.9625 | NB | | | |
| | Akers | | | | 131.8 | 100.0 | 9 |
| | Buckhorn | | | | 131.8 | 123.0 | 2 |
| | Heavens Gate | | | | 131.8 | 162.2 | 15 |
| | Mt. Howard | | | | 131.8 | 131.8 | 3 |
| | Jim Creek | | | | 131.8 | 146.2 | 5 |
| | Lookout | | | | 131.8 | 114.8 | 11 |
| | Pt . Prominence | | | | 131.8 | 127.3 | 12 |
| | Saddle Butte | | | | 131.8 | 136.5 | 4 |
| | Somers | | | | 131.8 | 167.9 | 7 |
| 7 | CMD 4 | 151.2425 | 159.4050 | NB | | | |
| | ODF EMILY | | | | 131.8 | 131.8 | 3 |
| | ODF BEAVER | | | | 131.8 | 162.2 | 15 |
| 8 | CMD 5 | 151.4375 | 159.3975 | NB | 131.8 | 146.2 | 5 |
| 9 | ODF RED | 151.3400 | 151.3400 | NB | 156.7 | 156.7 | 6 |
| 10 | ODF WHITE | 151.3100 | 151.3100 | NB | 156.7 | 156.7 | 6 |
| 11 | WWF Project | 168.1500 | 168.1500 | NB | 131.8 | 131.8 | 3 |
| 12 | A/G 44 | 167.6250 | 167.6250 | NB | | | |
| 13 | A/G 9 | 166.9125 | 166.9125 | NB | | | |
| 14 | OR STATE FIRE MARSHAL | 154.2800 | 154.2800 | NB | 156.7 | 156.7 | 6 |
| 15 | W-W Tac | 167.5250 | 167.5250 | NB | 131.8 | 131.8 | 3 |
| 16 | AIR GUARD | 168.6250 | 168.6250 | NB | | 110.9 | 1 |



Umatilla North Half Map



Umatilla South Half Map

