

<u>Group</u>	<u>Name</u>	
1	Umatilla NF Admin	(Tone Selectable)
2	UMF North Admin	( Alpha Non-Tone Selectable )
3	UMF South Admin	( Alpha Non-Tone Selectable )
4	Umatilla NF North Half	(Tone Selectable)
5	Umatilla NF South Half	( Tone Selectable)
6	N Wallowa Whitman- Wallowa Fire Zone	(Tone Selectable)
7	Central Wallowa Whitman-LaGrande Unit	(Alpha Non-Tone Selectable )
8	S Wallowa Whitman-Whitman Unit	(Tone Selectable)
9	Malheur NF- Blue Mountain RD	(Alpha Non-Tone Selectable )
10	Prairie City RD	(Alpha Non-Tone Selectable)
11	Central Oregon (Dayville)	(Alpha Non-Tone Selectable )
12	Umatilla Type 3 IA	(Tone Selectable)
13	Wallowa Whitman Type 3 IA	(Tone Selectable)
14-15	Open	



IMPORTANT Changes for 2013

- \* The Pomeroy Frequencies have changed, tones remain the same
- \* Bone Springs is back online
- \* The Project frequency has changed for both the Umatilla and Wallowa Whitman NF
- \* The UMF South Tac Channel has been changed
- \* Frequency & Tone changes for the Wallowa Whitman South

\* Designates Non-Standard NWCG Tone

**Group 1 Umatilla National Forest Admin**

<b>CH #</b>	<b>CH Name</b>	<b>RX Freq</b>	<b>TX Freq</b>	<b>Mode</b>	<b>Tone</b>	<b>Tone Freq</b>
1	UMF North TAC	164.1250	164.1250	NB		
2	UMF South TAC	168.2375	168.2375	NB		
3	UMF Project	168.7750	168.7750	NB	3	131.8
4	Walla Walla	171.7875	163.3750	NB		
	Black Mtn North Repeater	-----	-----		1	110.9
	Spout Springs Repeater	-----	-----		11	114.8
	Bone Springs Repeater	-----	-----		2	123.0
	Lookout Repeater	-----	-----		3	131.8
	Table Rock Repeater	-----	-----		8	103.5
5	Heppner	162.9625	166.6875	NB		
	Madison	-----	-----		4	136.5
	Tamarack Repeater	-----	-----		6	156.7
	Black Mtn South Repeater	-----	-----		13	141.3
6	Pomeroy	173.7750	164.8250	NB		
	Tallow Flat Repeater	-----	-----		6	156.7
	Cottonwood Repeater	-----	-----		3	131.8
	Robertson Field Repeater	-----	-----		2	123.0
	Saddle Butte Repeater	-----	-----		5	146.2
	Diamond Peak Repeater	-----	-----		14	151.4
	Oregon Butte Repeater	-----	-----		7	167.9
7	North Fork	164.1250	170.3250	NB		
	Tower Mtn Repeater	-----	-----		13	141.3
	Desolation Repeater	-----	-----		8	103.5
	Bone Point	-----	-----		15	162.2
8	ODF/North East OR	151.1600	159.4425	NB		
	Mt Emily Repeater	-----	-----		3	131.8
	Black Mtn Repeater	-----	-----		13	141.3
	Spout Springs Repeater	-----	-----		12	179.9*
9	WA DNR	159.4200	151.2950	NB		
	Dayton	-----	-----		9	D223*
	Pasco	-----	-----		10	D271*
	Asotin	-----	-----		16	D365*
10	A/G 44	167.6250	167.6250	NB		
11	A/G 9	166.9125	166.9125	NB		
12	A/G 38	167.3750	167.3750	NB		
13	A/G 24	168.6375	168.6375	NB		
14	OR SAR	155.8050	155.8050	NB	6	156.7
15	WA SAR	155.1600	155.1600	NB		
16	National Air Guard	168.6250	168.6250	NB	1	110.9

\* Designates Non-Standard NWCG Tone

**Group 2 UMF North Admin - No Tone Selection**

<u>CH #</u>	<u>CH Name</u>	<u>RX Freq</u>	<u>TX Freq</u>	<u>Mode</u>	<u>Tone</u>	<u>Tone Freq</u>
1	UMF North TAC	164.1250	164.1250	NB		
2	UMF Project	168.7750	168.7750	NB		131.8
3	WW - Black Mtn North	171.7875	163.3750	NB		110.9
4	WW - Spout Springs	171.7875	163.3750	NB		114.8
5	WW - Bone Springs	171.7875	163.3750	NB		123.0
6	WW - Lookout	171.7875	163.3750	NB		131.8
7	WW - Table Rock	171.7875	163.3750	NB		103.5
8	PM - Tallow Flat	173.7750	164.8250	NB		156.7
9	PM - Cottonwood	173.7750	164.8250	NB		131.8
10	PM - Robertson Field	173.7750	164.8250	NB		123.0
11	PM - Saddle Butte	173.7750	164.8250	NB		146.2
12	PM - Diamond Peak	173.7750	164.8250	NB		151.4
13	PM - Oregon Butte	173.7750	164.8250	NB		167.9
14	A/G 44	167.6250	167.6250	NB		
15	WA SAR	155.1600	155.1600	NB		
16	National Air Guard	168.6250	168.6250	NB		110.9

**Group 3 UMF South Admin - No Tone Selection**

<u>CH #</u>	<u>CH Name</u>	<u>RX Freq</u>	<u>TX Freq</u>	<u>Mode</u>	<u>Tone</u>	<u>Tone Freq</u>
1	UMF South TAC	168.2375	168.2375	NB		
2	UMF Project	168.7750	168.7750	NB		131.8
3	HP - Madison	162.9625	166.6875	NB		136.5
4	HP - Tamarack	162.9625	166.6875	NB		156.7
5	HP - Black Mtn South	162.9625	166.6875	NB		141.3
6	NF - Tower Mtn	164.1250	170.3250	NB		141.3
7	NF - Desolation	164.1250	170.3250	NB		103.5
8	NF - Bone Point	164.1250	170.3250	NB		162.2
9	ODF - Black Mtn	151.1600	159.4425	NB		141.3
10	ODF - Fossil/Madison	151.1450	159.2850	NB		151.4
11	A/G 44	167.6250	167.6250	NB		
12	A/G 9	166.9125	166.9125	NB		
13	A/G 38	167.3750	167.3750	NB		
14	A/G 24	168.6375	168.6375	NB		
15	OR SAR	155.8050	155.8050	NB		156.7
16	National Air Guard	168.6250	168.6250	NB		110.9

**Group 4 Umatilla National Forest North Half**

<b>CH#</b>	<b>CH Name</b>	<b>RX Freq</b>	<b>TX Freq</b>	<b>Mode</b>	<b>Tone</b>	<b>Tone Freq</b>
1	UMF North TAC	164.1250	164.1250	NB		
2	A/G 9	166.9125	166.9125	NB		
3	UMF Project	168.7750	168.7750	NB	3	131.8
4	A/G 44	167.6250	167.6250	NB		
5	Walla Walla	171.7875	163.3750	NB		
	Black Mtn Rptr	-----	-----		1	110.9
	Spout Springs Rptr	-----	-----		11	114.8
	Bone Springs Rptr	-----	-----		2	123.0
	Lookout Rptr	-----	-----		3	131.8
	Table Rock Rptr	-----	-----		8	103.5
6	ODF PDT	151.1600	159.4425	NB		
	Mt. Emily Rptr	-----	-----		3	131.8
	Black Mtn Rptr	-----	-----		13	141.3
	Spout Springs Rptr	-----	-----		12	179.9*
7	Pomeroy	173.7750	164.8250	NB		
	Tallow Flat Rptr	-----	-----		6	156.7
	Cottonwood Rptr	-----	-----		3	131.8
	Robertson Field Rptr	-----	-----		2	123.0
	Saddle Butte Rptr	-----	-----		5	146.2
	Diamond Peak Rptr	-----	-----		14	151.4
	Oregon Butte Rptr	-----	-----		7	167.9
8	ODF Courtney Rptr	151.4375	159.3975	NB	5	146.2
9	OR SAR	155.8050	155.8050	NB	6	156.7
10	WA DNR	159.4200	151.2950	NB		
	Dayton Rptr	-----	-----		9	D223*
	Pasco Rptr	-----	-----		10	D271*
	Asotin	-----	-----		16	D365*
11	WA DNR Common TAC	151.4150	151.4150	NB	8	103.5
12	WA DNR A/G	159.2700	159.2700	NB	8	103.5
13	ODF White	151.3100	151.3100	NB	6	156.7
14	ODF Red	151.3400	151.3400	NB	6	156.7
15	WA SAR	155.1600	155.1600	NB		
16	AIR GUARD	168.6250	168.6250	NB	1	110.9

\* Designates Non-Standard NWCG Tone

**Group 5 Umatilla National Forest South Half**

<b>CH#</b>	<b>CH Name</b>	<b>RX Freq</b>	<b>TX Freq</b>	<b>Mode</b>	<b>Tone</b>	<b>Tone Freq</b>
1	A/G 9	166.9125	166.9125	NB		
2	A/G 24	168.6375	168.6375	NB		
3	UMF Project	168.7750	168.7750	NB	3	131.8
4	A/G 38	167.3750	167.3750	NB		
5	A/G 44	167.6250	167.6250	NB		
6	<b>ODF PDT</b>	<b>151.1600</b>	<b>159.4425</b>	<b>NB</b>		
	Mt. Emily Rptr	-----	-----		3	131.8
	Black Mtn Rptr	-----	-----		13	141.3
	Spout Springs Rptr	-----	-----		12	179.9*
7	<b>Heppner</b>	<b>162.9625</b>	<b>166.6875</b>	<b>NB</b>		
	Madison Butte Rptr	-----	-----		4	136.5
	Black Mtn South Rptr	-----	-----		13	141.3
	Tamarack Mtn Rptr	-----	-----		6	156.7
8	<b>ODF John Day</b>	<b>151.2050</b>	<b>159.3750</b>	<b>NB</b>		
	Dixie Butte Rptr	-----	-----		3	131.8
	Aldrich Mtn Rptr	-----	-----		15	162.2
9	<b>North Fork</b>	<b>164.1250</b>	<b>170.3250</b>	<b>NB</b>		
	Desolation Rptr	-----	-----		8	103.5
	Tower Mtn Rptr	-----	-----		13	141.3
	Bone Point Rptr	-----	-----		15	162.2
10	<b>ODF WHITE NET</b>	<b>151.3100</b>	<b>151.3100</b>	<b>NB</b>	6	156.7
11	<b>ODF RED NET</b>	<b>151.3400</b>	<b>151.3400</b>	<b>NB</b>	6	156.7
12	<b>MAF PROJECT</b>	<b>170.5000</b>	<b>170.5000</b>	<b>NB</b>		
13	<b>MAF North , Blue Mtn. RD</b>	<b>172.4000</b>	<b>169.5750</b>	<b>NB</b>		
	Long Creek	-----	-----		1	110.9
	North Dixie	-----	-----		2	123.0
14	<b>Fossil</b>	<b>151.1450</b>	<b>159.2850</b>	<b>NB</b>		
	Snowboard	-----	-----		12	179.9*
	Madison	-----	-----		14	151.4
15	<b>OR SAR</b>	<b>155.8050</b>	<b>155.8050</b>	<b>NB</b>	3	156.7
16	<b>AIR GUARD</b>	<b>168.6250</b>	<b>168.6250</b>	<b>NB</b>	1	110.9

\* Designates Non-Standard NWCG Tone

**Group 6** Wallowa Whitman NF- Wallowa Fire Zone

<b>CH#</b>	<b>CH Name</b>	<b>RX Freq</b>	<b>TX Freq</b>	<b>Mode</b>	<b>Tone</b>	<b>Tone Freq</b>
<b>1</b>	<b>WWF Wallowa Unit</b>	<b>166.0000</b>	<b>164.0250</b>	<b>NB</b>		
	Akers Butte	-----			<b>1</b>	<b>110.9</b>
	Buckhorn Springs	-----			<b>2</b>	<b>123.0</b>
	Mt. Howard	-----			<b>3</b>	<b>131.8</b>
	Lookout Mtn	-----			<b>6</b>	<b>156.7</b>
	Somers Pt	-----			<b>7</b>	<b>167.9</b>
	Pt. Prominence	-----			<b>8</b>	<b>103.5</b>
	Saddle Butte	-----			<b>14</b>	<b>151.4</b>
<b>2</b>	<b>NORTH End Direct</b>	<b>166.0000</b>	<b>166.0000</b>	<b>NB</b>		
<b>3</b>	<b>WWF Project</b>	<b>168.1500</b>	<b>168.1500</b>	<b>NB</b>	<b>3</b>	<b>131.8</b>
<b>4</b>	<b>WWF Tactical</b>	<b>167.5250</b>	<b>167.5250</b>	<b>NB</b>		
<b>5</b>	<b>A/G 44</b>	<b>167.6250</b>	<b>167.6250</b>	<b>NB</b>		
<b>6</b>	<b>A/G 9</b>	<b>166.9125</b>	<b>166.9125</b>	<b>NB</b>		
<b>7</b>	<b>ODF Courtney Rptr</b>	<b>151.4375</b>	<b>159.3975</b>	<b>NB</b>	<b>5</b>	<b>146.2</b>
<b>8</b>	<b>ODF White Net</b>	<b>151.3100</b>	<b>151.3100</b>	<b>NB</b>	<b>6</b>	<b>156.7</b>
<b>9</b>	<b>ODF Red Net</b>	<b>151.3400</b>	<b>151.3400</b>	<b>NB</b>	<b>6</b>	<b>156.7</b>
<b>10</b>	<b>Wallowa County</b>	<b>155.0250</b>	<b>155.7750</b>	<b>NB</b>		
	Sheep Rptr	-----			<b>13</b>	<b>141.3</b>
	Courtney Rptr	-----			<b>11</b>	<b>114.8</b>
	Howard Butte	-----			<b>7</b>	<b>167.9</b>
<b>11</b>	<b>Enterprise FD TAC</b>	<b>153.7700</b>	<b>153.7700</b>	<b>NB</b>	<b>13</b>	<b>141.3</b>
<b>12</b>	<b>Joseph FD TAC</b>	<b>153.8900</b>	<b>153.8900</b>	<b>NB</b>	<b>13</b>	<b>141.3</b>
<b>13</b>	<b>Wallowa FD TAC</b>	<b>154.1600</b>	<b>154.1600</b>	<b>NB</b>	<b>13</b>	<b>141.3</b>
<b>14</b>	<b>Wallowa County SAR</b>	<b>155.8050</b>	<b>155.8050</b>	<b>NB</b>	<b>6</b>	<b>156.7</b>
<b>15</b>	<b>OR State Fire Marshal</b>	<b>154.2800</b>	<b>154.2800</b>	<b>NB</b>	<b>6</b>	<b>156.7</b>
<b>16</b>	<b>AIR GUARD</b>	<b>168.6250</b>	<b>168.6250</b>	<b>NB</b>	<b>1</b>	<b>110.9</b>

\* Designates Non-Standard NWCG Tone

**Group 7 LaGrande Unit**

<u>CH#</u>	<u>CH Name</u>	<u>RX Freq</u>	<u>TX Freq</u>	<u>Mode</u>	<u>Tone</u>	<u>Tone Freq</u>
1	WWF Project	168.1500	168.1500	NB		131.8
2	WWF-Tactical	167.5250	167.5250	NB		131.8
3	W-W Mt. Emily FS	170.5250	164.8000	NB		167.9
4	W-W Mule Peak FS	170.5250	164.8000	NB		151.4
5	W-W Johnson Rock FS	170.5250	164.8000	NB		103.5
6	Red Net	151.3400	151.3400	NB		156.7
7	White Net	151.3100	151.3100	NB		156.7
8	Union County Fire	154.4450	154.4450	WB		173.8
9	ODF Mt Emily #2 Rptr	151.2425	159.4050	NB		131.8
10	W-W Summit FS	170.4625	164.1500	NB		141.3
11	W-W Beaver FS	170.4625	164.1500	NB		127.3
12	UMF North Fork Tower FS	164.1250	170.3250	NB		141.3
13	UMF Project	168.7750	168.7750	NB		131.8
14	A/G 9	166.9125	166.9125	NB		
15	A/G 44	167.6250	167.6250	NB		
16	Air Guard	168.6250	168.6250	NB		110.9

**Group 8 Whitman Unit**

<u>CH#</u>	<u>CH Name</u>	<u>RX Freq</u>	<u>TX Freq</u>	<u>Mode</u>	<u>Tone</u>	<u>Tone Freq</u>
1	Dixie East	173.0250	171.5750	NB	2	123.0
2	UMF-Desolation	164.1250	170.3250	NB	8	103.5
3	Wallowa-Whitman South	170.4625	164.1500	NB		
	Beaver	-----			12	127.3
	Summit	-----			13	141.3
	Mt Ireland	-----			14	151.4
	Tablerock	-----			15	162.2
	Sheep	-----			16	192.8
4	WWF TAC	167.5250	167.5250	NB		
5	WWF Project	168.1500	168.1500	NB	3	131.8
6	A/G 44	167.6250	167.6250	NB		
7	A/G 9	166.9125	166.9125	NB		
8	ODF-South	151.2425	159.4050	NB		
	Beaver				15	162.2
	Mt Emily 2				3	131.8
9	A/G 62	169.3625	169.3625	NB		
10	ODF-Red Net	151.3400	151.3400	NB	6	156.7
11	ODF-White Net	151.3100	151.3100	NB	6	156.7
12	A/G 38	167.3750	167.3750	NB		
13	BLM-Lookout Mtn	172.6125	166.3750	NB	11	114.8
14	BLM-Beaver Rptr	171.6500	166.3000	NB	10	107.2
15	BLM-SOA Direct	173.6750	173.6750	NB	3	131.8
16	AIR GUARD	168.6250	168.6250	NB	1	110.9

\* Designates Non-Standard NWCG Tone

**Group 9 MALHUER Blue Mountain RD**

<u>CH#</u>	<u>CH Name</u>	<u>RX Freq</u>	<u>TX Freq</u>	<u>Mode</u>	<u>Tone</u>	<u>Tone Freq</u>
1	North Long Creek	172.4000	169.5750	NB		110.9
2	North Dixie	172.4000	169.5750	NB		123.0
3	North Aldrich	172.4000	169.5750	NB		131.8
4	North Fall Mtn	172.4000	169.5750	NB		136.5
5	North Snow Mtn	172.4000	169.5750	NB		103.5
6	Project	170.5000	170.5000	NB		
7	North-PORTABLE	172.4000	169.5750	NB		100.0
8	A/G 38	167.3750	167.3750	NB		
9	FireNet Fall Mtn	170.3500	170.3500	NB		136.5
10	FireNet Dixie	170.3500	170.3500	NB		123.0
11	ODF Direct	151.2050	151.2050	NB		162.2
12	ODF Red Net	151.3400	151.3400	NB		156.7
13	ODF White Net	151.3100	151.3100	NB		156.7
14	A/G 24	168.6375	168.6375	NB		
15	BLM-SOA Direct	173.6750	173.6750	NB		131.8
16	Air Guard	168.6250	168.6250	NB		110.9

**Group 10 MALHUER Prarie City**

<u>CH#</u>	<u>CH Name</u>	<u>RX Freq</u>	<u>TX Freq</u>	<u>Mode</u>	<u>Tone</u>	<u>Tone Freq</u>
1	East Dixie	173.0250	171.5750	NB		123.0
2	East Sheep	173.0250	171.5750	NB		146.2
3	East Antelope	173.0250	171.5750	NB		156.7
4	East King Mtn	173.0250	171.5750	NB		167.9
5	WWNF Tablerock	170.4625	164.1500	NB		162.2
6	Project	170.5000	170.5000	NB		
7	East - PORTABLE	173.0250	171.5750	NB		100.0
8	A/G 38	167.3750	167.3750	NB		
9	North Dixie	172.4000	169.5750	NB		123.0
10	FireNet Dixie	170.3500	170.3500	NB		123.0
11	ODF Direct	151.2050	151.2050	NB		162.2
12	ODF Red Net	151.3400	151.3400	NB		156.7
13	ODF White Net	151.3100	151.3100	NB		156.7
14	A/G 24	168.6375	168.6375	NB		
15	BLM-SOA Direct	173.6750	173.6750	NB		131.8
16	Air Guard	168.6250	168.6250	NB		110.9



**Group 11 Central Oregon (Dayville)**

<u>CH#</u>	<u>CH Name</u>	<u>RX Freq</u>	<u>TX Freq</u>	<u>Mode</u>	<u>Tone</u>	<u>Tone Freq</u>
1	BLM Aldrich Rptr	172.6500	163.1500	NB		123.0
2	ODF Aldrich Rptr	151.2050	159.3750	NB		162.2
3	OCH Aldrich Rptr	169.1250	168.1250	NB		151.4
4	OCH Wolf Rptr	169.1250	168.1250	NB		141.3
5	OCH Pisgah Rptr	169.1750	170.5500	NB		114.8
6	BLM Rancheria Rptr	172.6500	163.1500	NB		107.2
7	OCH Viewpoint Rptr	169.9750	168.7500	NB		114.8
8	OCH Stephenson Rptr	169.9750	168.7500	NB		151.4
9	OCH Round Mtn Rptr	169.1750	170.5500	NB		107.2
10	OCH Grizzly Rptr	169.9750	168.7500	NB		131.8
11	A/G 61	169.2875	169.2875	NB		
12	BLM R6 Tactical 5	166.7250	166.7250	NB		
13	BLM TAC	173.6750	173.6750	NB		
14	ODF RED NET	151.3400	151.3400	NB		156.7
15	A/G 37	167.3000	167.3000	NB		
16	Air Guard	168.6250	168.6250	NB		110.9

\* Designates Non-Standard NWCG Tone

**Group 12 UMA Type 3 IA**

CH #	Name	RX Frequency	TX Frequency	Mode	FS Guard	
					Tone	Tone Freq
1	TAC 1	166.7250	166.7250	NB		
2	TAC 2	166.7750	166.7750	NB		
3	TAC 3	168.2500	168.2500	NB		
4	<b>CMD 1</b>	<b>164.1250</b>	<b>170.3250</b>	<b>NB</b>		
	Desolation Rptr	-----	-----		8	103.5
	Tower Mtn Rptr	-----	-----		13	141.3
	Bone Point Rptr	-----	-----		15	162.2
5	<b>CMD 2</b>	<b>171.7875</b>	<b>163.3750</b>	<b>NB</b>		
	Black Mtn Rptr	-----	-----		1	110.9
	Spout Springs	-----	-----		11	114.8
	Bone Springs	-----	-----		2	123.0
	Lookout Repeater	-----	-----		3	131.8
	Tablerock	-----	-----		8	103.5
6	<b>CMD 3</b>	<b>173.7750</b>	<b>164.8250</b>	<b>NB</b>		
	Tallow Flat Rptr	-----	-----		6	156.7
	Cottonwood Rptr	-----	-----		3	131.8
	Robertson Field Rptr	-----	-----		2	123.0
	Saddle Butte Rptr	-----	-----		5	146.2
	Diamond Peak Rptr	-----	-----		14	151.4
	Oregon Butte Rptr	-----	-----		7	167.9
7	<b>CMD 4</b>	<b>151.1600</b>	<b>159.4425</b>	<b>NB</b>		
	Mt. Emily	-----	-----		3	131.8
	Black Mtn	-----	-----		13	141.3
	Spout	-----	-----		12	179.9
8	<b>CMD 5</b>	<b>151.4375</b>	<b>159.3975</b>	<b>NB</b>	5	146.2
9	<b>ODF RED</b>	<b>151.3400</b>	<b>151.3400</b>	<b>NB</b>	6	156.7
10	<b>ODF WHITE</b>	<b>151.3100</b>	<b>151.3100</b>	<b>NB</b>	6	156.7
11	<b>UMA PROJECT</b>	<b>168.7750</b>	<b>168.7750</b>	<b>NB</b>	3	131.8
12	<b>A/G 44</b>	<b>167.6250</b>	<b>167.6250</b>	<b>NB</b>		
13	<b>A/G 9</b>	<b>166.9125</b>	<b>166.9125</b>	<b>NB</b>		
14	<b>OR STATE FIRE MARSHAL</b>	<b>154.2800</b>	<b>154.2800</b>	<b>NB</b>	6	156.7
15	<b>OPEN</b>					
16	<b>AIR GUARD</b>	<b>168.6250</b>	<b>168.6250</b>	<b>NB</b>	1	110.9

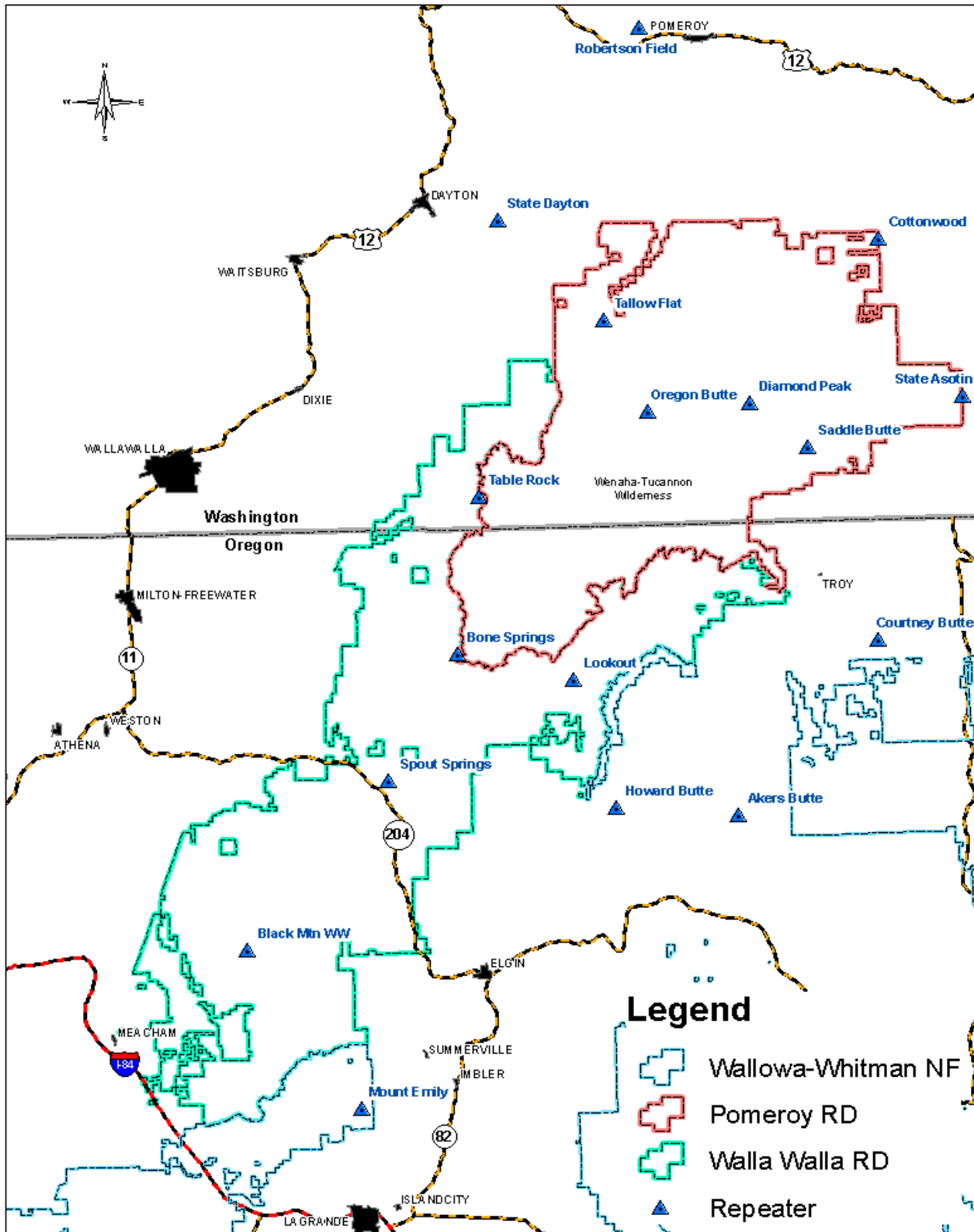
\* Designates Non-Standard NWCG Tone

**Group 13 W-W Type 3 IA**

CH #	Name	RX Frequency	TX Frequency	Mode	FS Guard	
					Tone	Tone Freq
1	TAC 1	168.0500	168.0500	NB		
2	TAC 2	168.2000	168.2000	NB		
3	TAC 3	168.6000	168.6000	NB		
4	CMD 1	170.5250	164.8000	NB		
	MT. EMILY	-----			7	167.9
	JOHNSON ROCK	-----			8	103.5
	MULE PEAK	-----			14	151.4
5	CMD 2	170.4625	164.1500	NB		
	Beaver	-----			12	127.3
	Summit	-----			13	141.3
	Mt Ireland	-----			14	151.4
	Tablerock	-----			15	162.2
	Sheep Mt.	-----			16	192.8
6	CMD 3	166.0000	164.0250	NB		
	Akers Butte	-----			1	110.9
	Buckhorn Springs	-----			2	123.0
	Mt Howard	-----			3	131.8
	Lookout Mtn	-----			6	156.7
	Somers Pt	-----			7	167.9
	Pt. Prominence	-----			8	103.5
	Saddle Butte	-----			14	151.4
7	CMD 4	151.2425	159.4050	NB		
	ODF EMILY	-----			3	131.8
	ODF BEAVER	-----			15	162.2
8	CMD 5	151.4375	159.3975	NB	5	146.2
9	ODF RED	151.3400	151.3400	NB	6	156.7
10	ODF WHITE	151.3100	151.3100	NB	6	156.7
11	WWF PROJECT	168.1500	168.1500	NB	3	131.8
12	A/G 44	167.6250	167.6250	NB		
13	A/G 9	166.9125	166.9125	NB		
14	OR STATE FIRE MARSHAL	154.2800	154.2800	NB	6	156.7
15	WWF TAC	167.525	167.525	NB		
16	AIR GUARD	168.6250	168.6250	NB	1	110.9

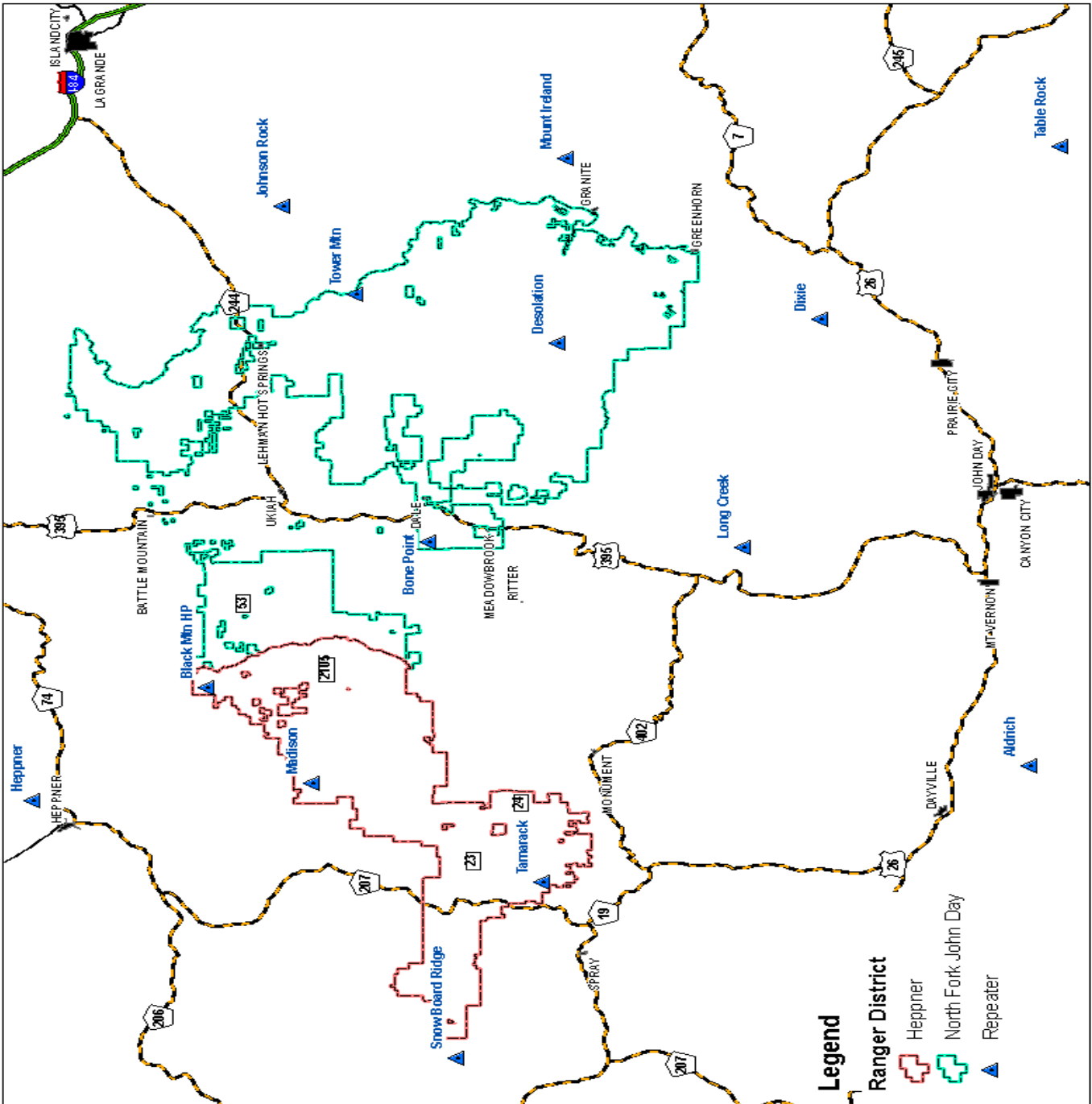
\* Designates Non-Standard NWCG Tone

### North Half Repeater Map



\* Designates Non-Standard NWCG Tone

South Half Repeater Map



\* Designates Non-Standard NWCG Tone

## BK Handheld Operation

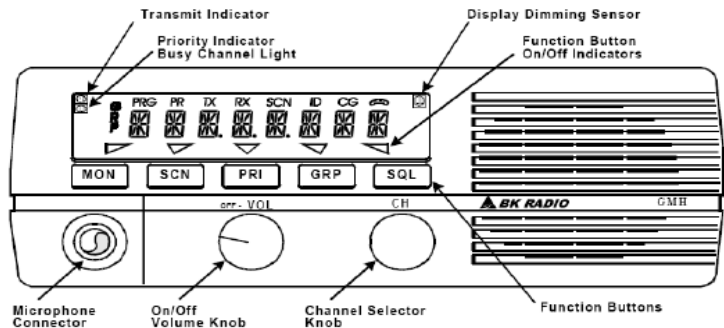
**To Transmit** press the PTT (push to talk) button on the side of the radio, or mic. When transmitting the red transmit indicator glows and TX appears in the display. Talk in a normal voice with mic 1-2 inches from your mouth. Release the PPT switch to stop transmitting.

**TURN RADIO ON** by turning the volume knob clockwise. A beep will indicate the radio is on. The current group will display momentarily, then change to the main channel screen showing the current channel and group #

**Toggle Switches** For basic operation the Priority and Scan toggles should be flipped towards the front of the radio. The HI/Low Toggle selects the transmit power of the radio.



## BK Mobile Operation



**Turn Power on:** for the GMH turn the volume knob clockwise. On the DMH radio hold the volumn knob down briefly. A been will indicate the radio is on.

### The Function buttons

[MON]	Monitor	[GRP]	Group #
[SCN]	Scan	[SQL]	Squelch Button
[PRI]	Primary Channel		

**SELECT GROUP** by pressing the # key, the current group will be displayed. Using the keypad enter the desired group number. Press the # key again, or wait 5 seconds and the radio will return to the channel screen.

**SELECT the CHANNEL** of closest repeater by turning the channel selector knob.

**TONE SELECTION** *The scan toggle sw must be in the off (forward position).* At the main channel display screen. Simply press a number on the keyboard corresponding to the repeaters tone. *The scan toggle sw can be turned back on if that function is desired.*

**SET SQUELCH** by turning the CG-SQ knob clock-wise until you hear static. Then turn the CG-SQ knob counter-clockwise slowly just until the static stops.

**Set Volume** by pressing the [MON] key to hear squech noise. Turn the Volume knob to set a comfortable level. Press the [MON] key again to stop squelch noise.

**Select Group** by pressing the [GRP] key and turning the Channel select knob. Press the [GRP] key again to return to the channel screen.

**SELECT the CHANNEL** of closest repeater by turning the channel selector knob.

**TONE SELECTION** *Scan must be off.* At the main channel display screen press a number on the Mic keypad corresponding to the repeaters tone.

\*If the Portable radio displays LOCKED, you can unlock it by holding the [FCN] key for a moment.